

Installation, Operating and Maintenance Manual

The serial number of your Kinos pool is



Congratulations for your purchase of Kinos cold pool!

Avant°pool Kinos is an easy-to-use and compact indoor cold pool, which gives you the benefits of winter swimming all year round. It enables optimal and high- quality cold recovery, eases muscle pain and inflammations, helps sleep and improves immune system. Avant°pool Kinos is made in Finland.

IMPORTANT BASICS:

- NEVER LET KINOS TO RUN WITHOUT THE FILTER
- MAKE SURE THE ELECTRICITY SOCKET IS GROUNDED (230V / 50Hz/60Hz)
- LEAVE 10-15cm SPACE BETWEEN THE LONG SIDES OF THE POOL AND THE WALL TO ENSURE SUFFICIENT VENTILATION
- DO NOT COVER THE VENTILATION GRILLS
- MAKE SURE THE WATER LEVEL IN THE POOL IS SUFFICIENT BEFORE TURNING ON THE POWER
- DO NOT USE SALT OR OTHER MINERALS IN THE POOL
- DO NOT USE SALT WATER IN THE POOL, ONLY FRESH TAP WATER
- CLEAN / FLUSH THE FILTER AT LEAST ONCE A WEEK
- CHANGE THE FILTER EVERY 2-6 MONTHS DEPENDING ON USE OF THE POOL
- CHANGE THE WATER EVERY 3-8 WEEKS DEPENDING ON THE USE OF THE POOL
- DO NOT OPEN THE ELECTRIC CABINET
- DO NOT USE THE KINOS POOL OUTDOORS WITHOUT A PROPER COVER, IT SHOULD BE PROTECTED FROM RAIN AND SNOW AT ALL TIMES
- DO NOT USE SLEEP MODE, IF AMBIENT TEMPERATURE IS BELOW 4°C

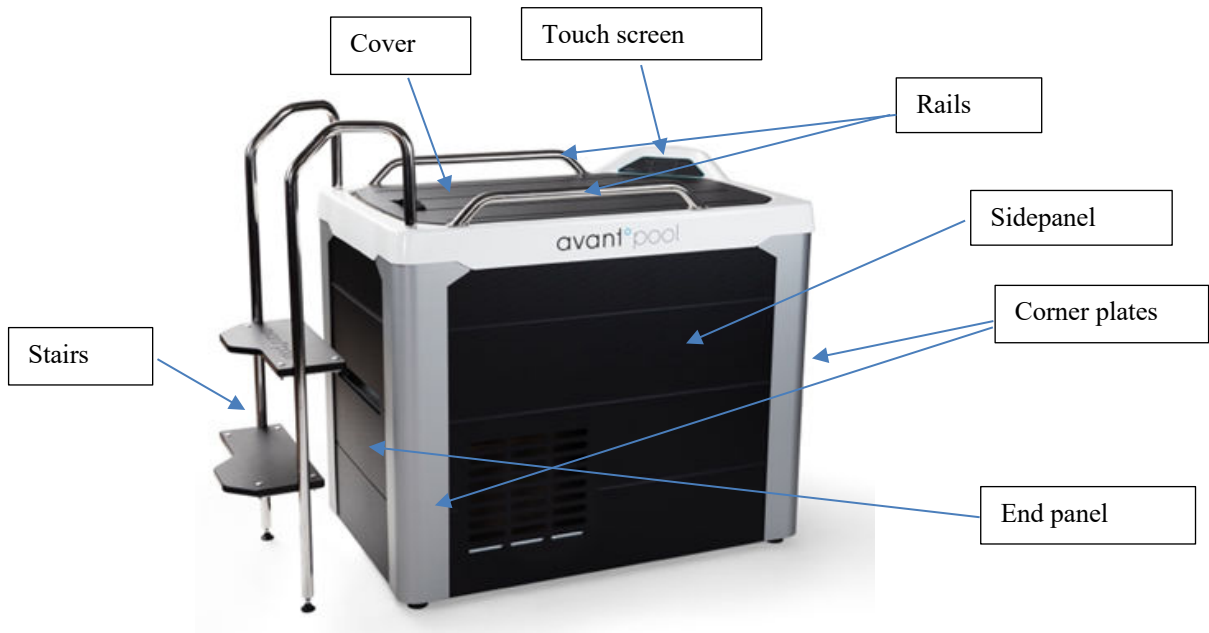
Table of contents

General safety instructions	5
Main external parts of Kinos pool	6
Transportation, installation, electrical connection	7
Detaching and attaching the panels	7
Installing the stairs	8
Start-up instructions	9
Operating instructions	11
Setting the water temperature	11
Timer	11
Entering and exiting the pool	12
Display options.....	13
Stop/start	13
Temperature mode	13
Set temperature.....	14
Lock temp setting.....	14
Sleep mode	15
Time of day	16
General maintenance and quality of water	17
Replacing the water	19
Replacing the UV-lamp	19
Problems and solutions.....	21
No flow-error	21
Temp measure err (Hi).....	21
Blank screen.....	22
Device does not cool to set temperature	22
Warranty.....	23
EU DECLARATION OF CONFORMITY	25

General safety instructions

- Before you start using the pool, read all instructions and follow them carefully.
- Do not let children use the pool unless they are always closely supervised by adults. Do not leave the pool without the cover if children have access to the room where it is stationed. Make sure the cover is always on when the pool is not in use.
- Persons with reduced physical or kinematic capabilities should not use the pool without sufficient instructions and/or supervision.
- Do not use the pool if the plug or supply cord is damaged. Order a new one from your dealer and make sure it is properly installed before re-starting to use the pool.
- Do not use the pool if the cover of the skimmer is damaged or not properly in place. If the cover of the skimmer is damaged, order a new one from your dealer and make sure it is properly in place before re-starting to use the pool.
- Do not use any electrical devices while in the pool or while at immediate distance of the pool.
- Check the water temperature always before entering the pool. The water temperature may not exceed +40 °C or be less than +4 °C.
- Persons with a history of heart disease, low or high blood pressure, circulatory system problems, diabetes, or any condition requiring medical treatment should consult a physician or a doctor before using the pool.
- Persons using medication should consult a physician or a doctor before using the pool since some medication may induce drowsiness while other medication may affect heart rate, blood pressure and circulation.
- Pregnant women should consult a physician or a doctor before using the pool.

Main external parts of Kinos pool



Technical information

- Measurements, without stairs: Length 1200 mm, width 790 mm, height 1050 mm
- Measurements, including stairs: Length 1200/1540 mm, width 790/1130 mm, height 1220 mm
- Capacity: 300 l
- Weight when filled: 450 kg
- Weight when empty: 147 kgs, with the rails and the stairs
- Water temperature range: Continuous variation between +4 °C - +38 °C
- Cooling power: 0,7 kW
- Heating power: 1,5 kW
- Average energy consumption: When reached target water temperature approx. 5 kWh/day
- Refrigerant: r134a
- Control panel: Digital touch control panel with water temperature guided timer for cold recovery
- Electric coupling: 230V/50Hz/60Hz, 1-phase. Plug equipped with residual-current device
- Sound pressure level: 54 dB (A)
- Degree of protection: IPX5

Transportation, installation, electrical connection

Kinos pool is packed in covering, durable and easily transportable carton container. It can be easily moved with a pallet jack. There are inset handles at both ends of the pool to help manual moving. The package container can be stored or re-used when needed.

The pool should be placed on even ground supportive to the legs in each four corners. We recommend the pool to be placed in premises suitable for handling water, ideally with a tiled floor, floor drain and sufficient ventilation. Adjustable feet enable placing the pool to premises with an inclined floor. When placed beside a wall, make sure to leave at least a 10-15 cm gap between the wall and the pool to ensure sufficient ventilation.

There should be a grounded and preferably wall mounted power socket (240V/50Hz/60Hz) within

5 m range of the pool. *Do not connect the plug to the power socket until the pool is filled completely with water (15 cm below the edge of the pool).*

Do not use the pool if the plug or supply cord is damaged. Order a new one from your dealer and make sure it is properly installed before re-starting to use the pool.

Detaching and attaching the panels

The side and end panels may need to be detached before installing the rails and the stairs, and during transportation, service and repair work. No tools are needed to detach or attach the panels. The panels are locked in with the aluminum corner plates, which are attached to the pool body with their inner shape.

Detaching the panels

1. Take a grip from the low section of the corner plate and raise it up appr. 3 cm and then pull it towards yourself (Fig. 1a, 1b and 1c).
2. Slide the corner plate downward and the upper part of it will be released from under the bowl's collar. Now you have detached the corner parts.
3. Repeat the same procedure for all four corner parts.
4. Now the panels can be easily detached by pulling them out slightly and sliding them down from under the bowl's collar.



Fig. 1a

Fig. 1b

Fig. 1c

Attaching the panels

1. Attach the panels back to fasteners (grooved side out). *NOTE that the side panels have openings to be placed in front of the machinery to ensure proper air circulation and avoid overheating of the machinery.*
2. Push the top of the corner plate approx. 4 cm under the basin collar.
3. Push then the low section of the corner plate towards the pool and push down until it stops.
4. Repeat the same for all corner plates.

Installing the stairs

Attach the stairs to the pool as follows:

1. The stairs can be placed to either of the long sides or to the front end of the pool. One of the rails can be placed to the front end as well, should the stairs be placed on the long side.
2. Place the pins of the stairs (or rail) through the holes. If needed, fasten to the frame using the pipe bushings and nuts.
3. Adjust the height of the stairs to correct level by screwing the pads.



Start-up instructions

- Clean the pool from possible dirt and stains.
- Fill the pool with water from the nearest faucet using a hose.

Note! Do not use salt or any other ingredients in the water which may harm the materials or cause blockage to the machinery.

- Water level should reach the horizontal joint of the pool basin (approx. 15 cm below the basin top), and never be under the opening of the cover of the skimmer (Fig. 2a and 2b).



Fig. 2a



Fig. 2b

- Do not connect the plug to the power socket until the pool is filled with water! Then connect the plug to the power socket and push the green residual-current device button.
- Set the existing time of the day with the arrows on the screen and press Save – or bypass time setting by pressing Save

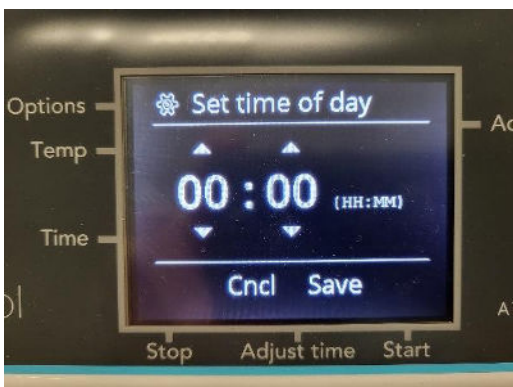


Fig. 3a



Fig. 3b

- The touch screen and the water circulating turn on and the water starts circulating in the pool. If the water does not start to circulate and there will be an “Error: No flow!” shown in the screen, then restart the device. This may happen due to air locks in the pipes. Repeat if needed until the water starts circulating.
- **Stopping the device can be done by pressing shortly the upper left corner cogwheel and then Stop (Fig. 4a and 4b). To restart, press Start.**



Fig. 4a



Fig. 4b

- In upper left corner of the touch screen, you can see the current temperature of the water and on the right corner the target temperature. The default target is set to 10°C. (Fig. 5)



Fig. 5

- Now the Kinos cold pool is successfully turned on!
- *Note! There is approx. 7 min delay before the cooling starts.*

Operating instructions

Setting the water temperature

On the left part of the touch screen you can see current water temperature.

You can portably set the water temperature between +4°C - +38°C. The desired target water temperature can be seen on the right part of the touch screen. Set the target temperature by using the + and - buttons.

The water cools down and warms up approx. 3-4 °C per hour. It is recommended to keep the pool cover on when the pool is not in use to save energy and to maintain the desired water temperature.

Timer

In bottom of the touch screen there is a bath timer for setting the immersion time and following the time spent in the pool. Once the target water temperature is set, a recommended cold recovery time is proposed. The white triangle shaped area suggests the minimum and maximum time for cold recovery time in that water temperature. The suggested cold recovery times are directional only and are based on general recommendations made by University of Jyväskylä faculty of Sports and Exercise Medicine. Set the timer by using the + and – buttons.

The timer starts by pushing the Start button (triangle) and can be stopped and cleared by using Stop button (square).



Entering and exiting the pool

In Kinos pool you can immerse partly or fully to the neck level. During entering and exiting the pool pay close attention as the surfaces might be slippery from water. Use the stairs and lean on the rails while entering and exiting the pool. Notice that you might feel temporary stiffness in limbs caused by the cold water, especially after a longer immersion time.

Display options

Stop/start

In the upper left corner of the display (Fig. 6a), there is an Options button (cogwheel). By pressing it shortly, you can stop and restart the unit (Fig 6b).



Fig. 6a



Fig. 6b

Temperature mode

By pressing the cogwheel icon long, "Temperature mode" –menu will appear (Fig. 7). Options are: show only Celsius or only Fahrenheit, or both. Desired choice is made by pressing the corresponded icon and then Save.



Fig. 7

Set temperature

By pressing the cogwheel icon long and then < or > buttons, you can change the menu to "Set temperature"-mode (Fig. 8), where you can set the desired target temperature after restart (e.g. after power cut). System will propose the existing target temperature, but it can be changed by - and + buttons. Save button will confirm the choice.



Fig. 8

Lock temp setting

By pressing the cogwheel icon long and then < or > buttons, you can change the menu to "Lock temp setting"-mode (Fig. 9a), where you can hide temperature setting in the touch screen. Desired choice is made by pressing the corresponded icon and then Save.

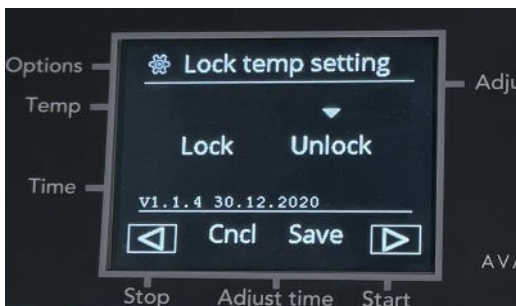


Fig. 9a

If you choose Lock and Save, then the + and - buttons in touch screen will disappear (Fig.9b). They can be returned by choosing Unlock and Save.



Fig. 9b

Sleep mode

By pressing the cogwheel icon long and then < or > buttons, you can change the menu to “Sleep mode” (Fig. 10a). In sleep mode, device will automatically shut down and restart in set time. Start time = shutting down, Stop time = restarting. Set the desired time, change Off-mode to On-mode by pressing it and then Save (Fig. 10b). Sleep mode time is restored in the memory of the device and will be repeated every day, until On/Off-mode is changed to Off.

Note! Do not use sleep mode, if ambient temperature is below 4°C.



Fig. 10a



Fig. 10b

When device is in sleep mode, touch screen will show the remaining time (Fig. 11). Sleep mode can be interrupted (that time) by pressing Cncl.

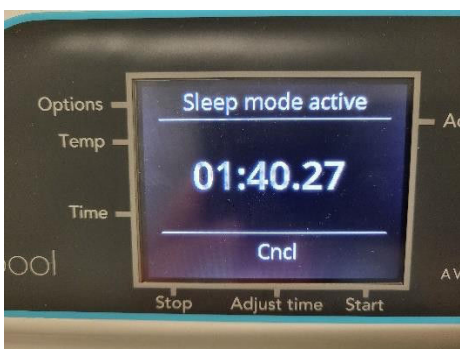


Fig. 11

Time of day

Precondition for Sleep mode to work properly is, that Time of the day is set. By pressing the cogwheel icon long and then < or > buttons, you can change the menu to “Set time of day”-mode (Fig. 12). If necessary, set the time and press Save.

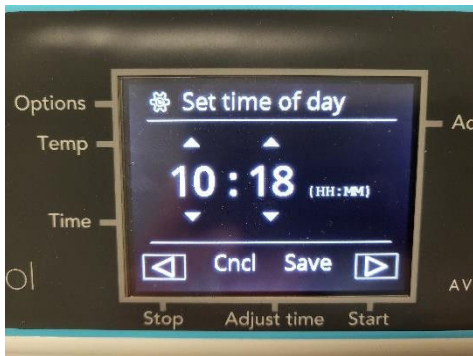


Fig. 12

General maintenance and quality of water

Maintenance of Kinos pool is easy. Automated and constant filtering accompanied with UV cleaning make sure the water stays clean and clear. Depending on the utilization frequency, occasional use of chlorine might be needed to disinfect the water (especially in heavy public use). *Should Kinos pool be in public use, the requirements set by local authorities for the water quality must be obeyed.*

On daily basis: Check the water level. It should ideally be approx. 15 cm from the basin top but not more than 8 cm below that. Too low water level may allow air in the pipes and cause breaking of the water pump. Also check the approximate water quality on daily basis as well the water circulation.

On weekly basis: Clean the possibly stained water line and the filter. The filter cartridge can be easily accessed behind the cover of the skimmer. The cover is released by simply lifting it directly up (Fig. 13a and 13b). The cartridge is released by turning it counterclockwise (to the left, Fig. 14a and 14b). **Note that the power must be turned off (see instructions on page 10, Stop/start) before releasing the filter cartridge!** Make sure no objects enter the skimmer. Flush the filter cartridge thoroughly under warm running water or shower (Fig. 15) (*do not use pressure washers as it may damage the filter material*).

The filter cartridge should be replaced always, if after cleaning the filter, the water circulation is not at normal level. Depending on the rate of usage, filter should be replaced every 2 to 6 months.

Check the water pH level which should be maintained on normative level (7,2 – 7,6). When needed you can finetune the pH level by using pH+ or pH- chemicals. Should the pool be in heavy daily use it is recommended to add half teaspoon of chlorine (natriumdiklorisocyanurat, dihydrat) to the water to reach the 0,3 – 1,2 ppm free chlorine level.

If the number of the users exceeds 10 users/day, or if the water temperature exceeds 15°C, it is recommended to add chlorine (natriumdiklorisocyanurat, dihydrat) frequently to the water in order to maintain 0,3 – 1,2 ppm free chlorine level



Fig. 13a



Fig. 13b



Fig. 14a



Fig. 14b



Fig. 15

Replacing the water

The frequency for changing the water depends on various factors, e.g. use rate, water temperature, maintenance etc., so there is no general rule for it. The water should latest be changed when the water is visually unclear. If the pool is in heavy daily use, filtering and UV cleaning or even the added chlorin might not keep the water clean for a long period of time. The frequency for changing the water may vary from couple of days to several months. However, we recommend changing the water at least every two months.

Before emptying the pool turn the power (see instructions on page 10, Stop/start). Empty the pool with a submersible pump to the nearest floor drain or sink. You can alternatively use simple siphon method. Should you not be able to fully empty the pool, use for example a wet vacuum cleaner or simply a bucket and cloth. Clean the pool with mild washing agent and rinse properly. *Do not use a pressure washer for cleaning the pool!*

The pool may be filled again after it has been emptied.

Note! Do not use salt or any other ingredients in the water which may harm the materials or cause blockage to the machinery.

Replacing the UV-lamp

The frequency for changing the UV-lamp is one year. **Pool needs to be emptied of water when changing the UV-lamp.** Detach the panels (see page 7) from the left side of the pool (Fig. 16). Disconnect the UV-disinfector's plug (Fig. 17a and Fig. 17b). Unscrew the cover of the UV-disinfector and gently pull out the UV-lamp (Fig. 18). Using the cotton gloves (Fig. 19) change the UV-lamp and gently put back to UV-disinfector. Connect back the plug as well as panel and corner plates.



Fig. 16

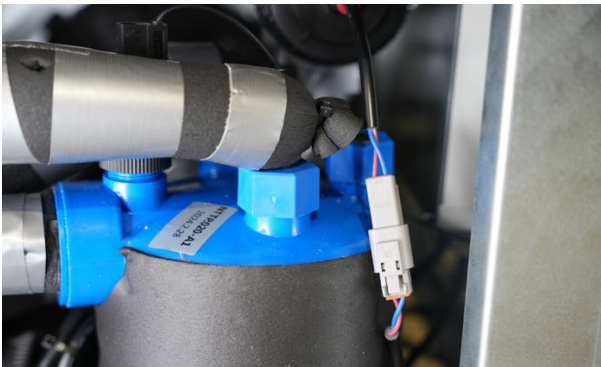


Fig. 17a

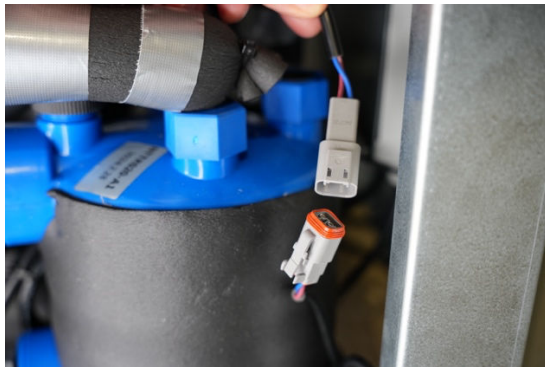


Fig. 17b

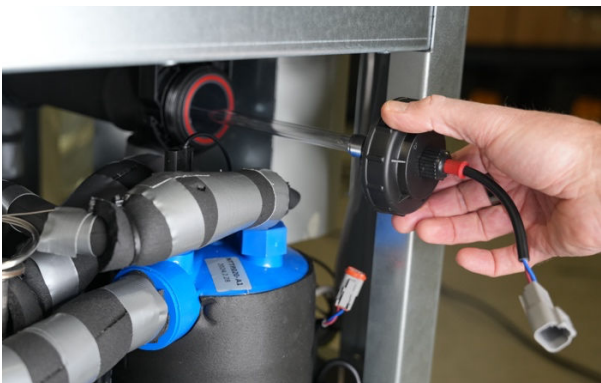


Fig. 18



Fig. 19

Problems and solutions

No flow-error

If the water is not circulating properly, the device will stop itself and an error message will appear (Fig. 20). Check the water level and condition of the filter cartridge. Add more water if needed. Clean the filter cartridge or replace it if needed. Should problem remain, please contact the retailer or manufacturer.

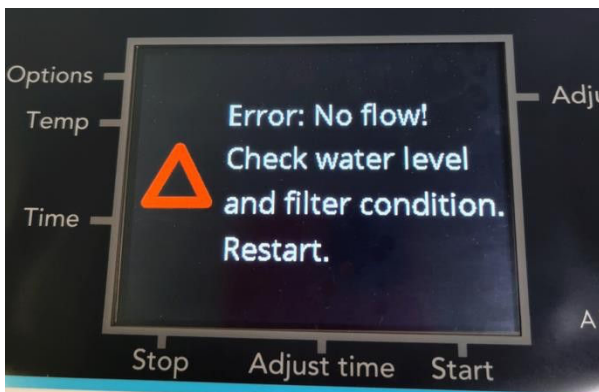


Fig. 20

Tip!

If for any reason, dirt has entered the piping system, it may disrupt the water flow and cause No flow -error. Take off the filter and flush piping system counterclockwise with fresh water through the pool's inlet nozzle (Fig. 21a and Fig. 21b).



Fig. 21a

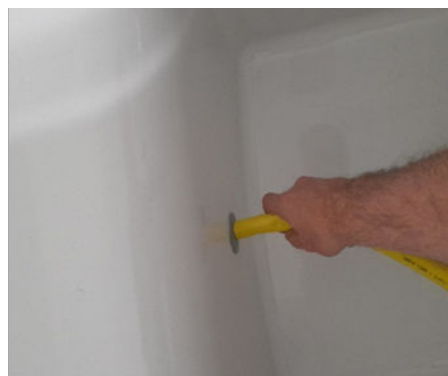


Fig. 21b

Temp measure err (Hi)

Should the water temperature exceed 40°C, the device will stop itself and an error message will appear. Add cooler water to the pool to lower the temperature.

Blank screen

If the touch screen is blank and the pool machinery is not running, check the power supply and/or if the residual-current device has activated. If the power supply is ok but the residual-current device has turned off the power, push the green button to de-activate. Should the problem remain, unplug the device and contact the retailer or manufacturer.

Device does not cool to set temperature

If the pool struggles to achieve the set temperature even though compressor is running, then check the condition of the condenser. Remove the side panels and vacuum the condenser's metal grate with a powerful vacuum cleaner, even if it looks clean (Fig. 22).



Fig. 22

Warranty

3 years

These materials have a 3-year warranty, which applies to fractures and breaking without external influence or other misuse of the device (see below limitations):

- pool (basin), frame, rails, steps, panels
- piping

Private use 2 years / commercial use 1 year

These parts and combinations (aggregate) have a limited 2-year warranty (private use) / limited 1-year warranty (commercial use), which applies to breaking without misuse of the device (see limitations below).

- mechanical and electrical parts and components
 - cooling unit (aggregate) as a whole
- components: pump, heat exchanger, condenser, compressor, heater
- touch screen control panel and control system
- lid and stairs

Warranty does not cover:

- Damage or defect caused by misuse of the device, wrong or inadequate electrical current or connection, negligence, inappropriate on-site operating conditions, repairs by non-Avantopool designated personnel, tampering, alterations or accidents in later transportations.
- Flood or rainwater, insect infestation or unreasonable outdoor exposure
- Damage caused due to the product not being reasonably installed, operated, maintained or used in accordance with Avantopool's instructions and specifications (User Manual)
- Damage caused by unauthorized alterations, accident, misuse, abuse, use of an incorrect voltage, power surges, thunderstorm activity, tampering and unauthorized repairs, or exposure to abnormally corrosive conditions
- Damage caused by the use of chemicals or minerals in the pool water.
- Damage caused by water or other liquids entering the electrical or electronics of the device through negligence.
- Damage caused by severely overheating the product due to negligence, such as covering the product's ventilations grills with towels, clothing, or other objects, or operating the pool too close to a wall or in a room/place with insufficient ventilation.

Following instructions stated in the User Manual is imperative. Follow the maintenance routines is utmost important. Damage cause by neglecting the maintenance routines may void the warranty.

Original owner & country of sale

Warranty is available only to the original purchaser / owner purchased from Avantopool directly or from an approved Avantopool reselling partner. This warranty is not transferable except with the written consent of Avantopool. The warranty applies only in the country where the Kinos pool was purchased or delivered to the original owner.

Proof

Proof of the purchase date, serial number and that the claimant is the original purchaser may be required. Additionally, Avantopool reserves the right to request the return to Avantopool of any component replaced under warranty, or alternatively, proof that the faulty component was actually disposed of or destroyed.

Right to repair or replace the product

Avantopool reserves the right to replace the product or relevant part of the product with the same or equivalent product or part rather than repair it.

Separate warranty on replaced components

Where defective parts are replaced with new parts, the new part will carry a separate warranty from the date of replacement, however this does not restart the original standard warranty.

Response time & place of repair work

Avantopool undertakes to approve and provide repair work promptly, however we will not accept responsibility for any costs whatsoever in regard to any repair work or transport costs that were not specifically approved by Avantopool prior to any such work or transport taking place. At its discretion, Avantopool may either repair the product at the premises of the owner of the product, or if the repair is beyond the scope of a local distributor or repair agent, Avantopool may request that the product be shipped back to its factory for a more thorough and comprehensive examination and repair. Where Avantopool determines that the repair needs to be carried out at its factory, Avantopool will be responsible for the cost of land transport so long as that transport is arranged by or approved by Avantopool. Avantopool will not be responsible for freight services arranged without its consent.

This limited warranty gives you specific legal rights in addition to remedies provided by local laws and regulations, which may vary from country to country.

EU DECLARATION OF CONFORMITY

Manufacturer:

Avantopool Oy

Finnoonlaaksontie 7

02270 Espoo

FINLAND

Declares that this appliance set to the market:

Avantopool model: Kinos

complies with the requirements of Low Voltage Directive 2014/35/EU:

Household and similar electrical appliances – Safety – General requirements IEC 60335-1

Particular requirements for whirlpool baths and whirlpool spas IEC 60335-2-60

and EMC 2004/108/EY requirements:

EMC IEC 61000-3-3

EMC IEC 61000-3-2

Espoo 6 / 12 / 2022



Pekka Nurmi

COO